



BMS Steel Detailing Services

Old No: 03, New No: 07, Babu Stereet,
Ranganathan Nagar, Porur,
Chennai - 600116
Tamil Nadu, India.
Mobile : +919841846710

Company Profile

Name:	BMS Steel Detailing Services
Organisation:	Steel Modeler's and Detailer's
Working Experience:	More than 9 Years
Working Staffs:	15 Staffs (with Technical Qualified Well Experienced Persons)
Tekla Knowledge:	From Version 11.0 to Version 2020 and Auto-Cad
Type of Work:	Both Modeling & Detailing with Part list, Bolt list & Material list seperations
Clients:	US Clients, Singapore Clients, Kenya Clients & Indian Clients

Our Merits

- 👍 Unique and Creative Solutions that meet the clients Expectation not only by realizing clients Business Objectives, particularly by our strict principles and relations.
- 👍 Continuous search for opportunities beyond the agreed communications and business objectives.
- 👍 Creative approaches to the clients special needs in order to find unique and tailored communication solutions
- 👍 Team work based on the implementation of the progressive communication disciplines.
- 👍 Professional Quality of service provided by highly motivated team.
- 👍 Courage and readiness to communicate on behalf of client in crisis
- 👍 Strong Technological Background



BMS Steel Detailing Services

Old No: 03, New No: 07, Babu Stereet,
Ranganathan Nagar, Porur,
Chennai - 600116
Tamil Nadu, India.
Mobile : +919841846710

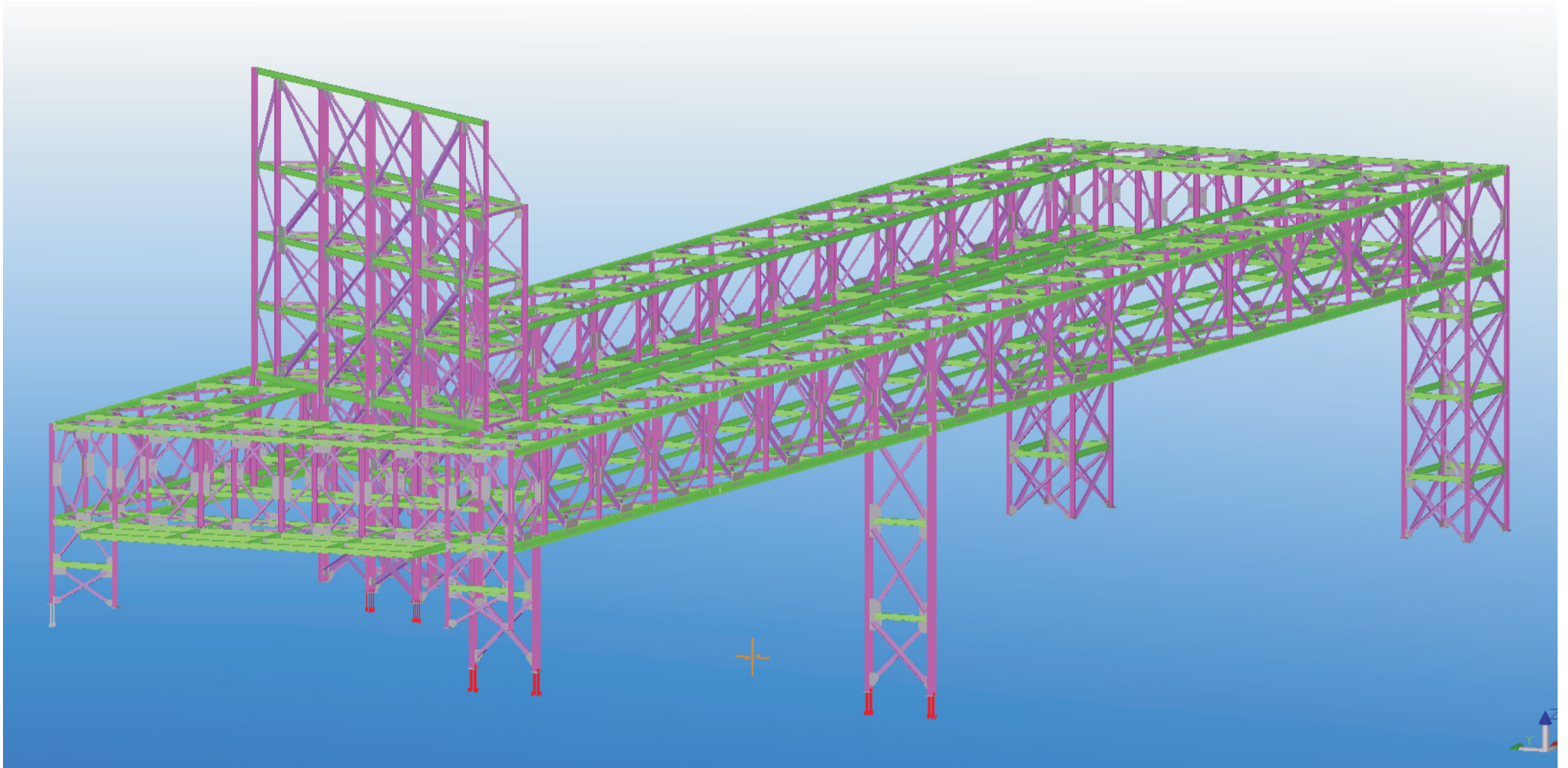
Work Procedures

- 👉 Analysing Contract Plans
- 👉 Creating Models with Experienced Modelers and consequently checking by Detailed Checkers
- 👉 Arising RFI to our clients day by day
- 👉 Creating Drawings for Editing Shop drawings, Plans & Sections
- 👉 Marking Clouds for details which had not received RFI Answers
- 👉 Sending Drawings for Approval
- 👉 Back for Approval corrections are made as per the conversation with clients or as per received Documents
- 👉 Fully deep checking with Checkers
- 👉 Minor corrections clearing and again checking by Checkers
- 👉 Sending Model with 100% Quality

Office Environment

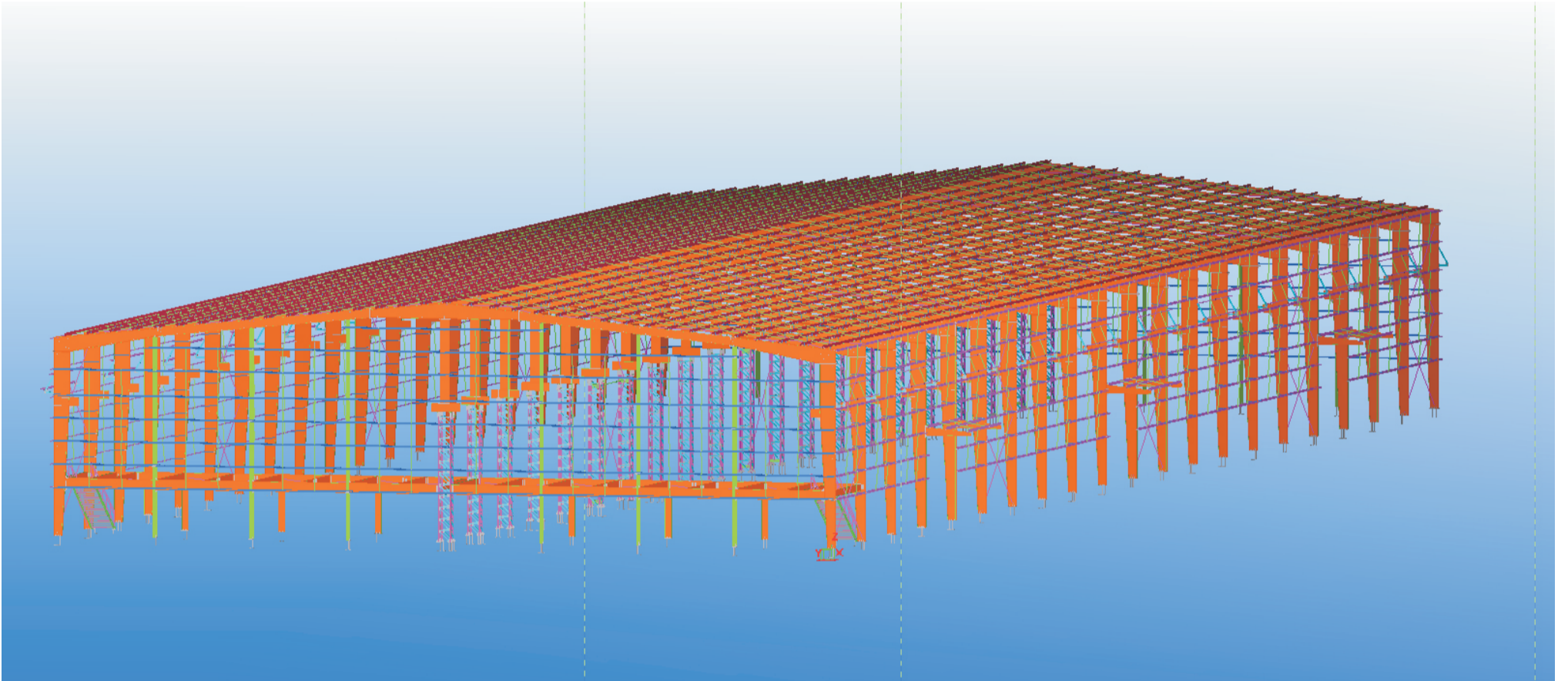
- 👉 Working Staffs 15 Members
- 👉 Hi-fi Configured Systems
- 👉 Technical Qualified Persons
- 👉 More than 9 Years Experience
- 👉 24 Hrs Working Facility
- 👉 Eligible to work very hard
- 👉 Team work Performance

3D - Model



FEATURE BOX

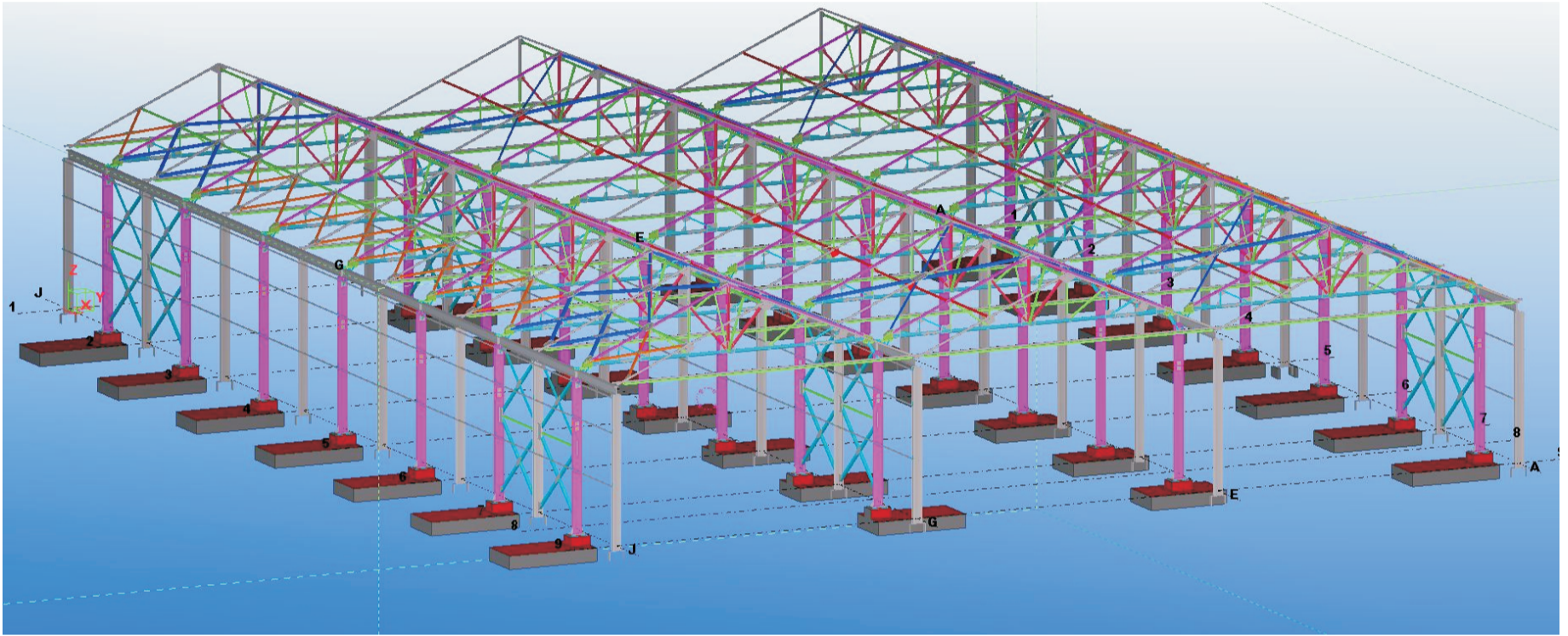
Project Name	Feature Box
Software	: Tekla 21
Responsibility	Detailing of Floor Beam, Elevation, Column & Brace
Weight	: 40 Ton



MANNUR STRUCTURE

Project Name Mannur Structure-PEB
Software : Tekla 21
Responsibility Detailing of Floor Beam, Elevation, Column & Brace
Weight : 280 Ton

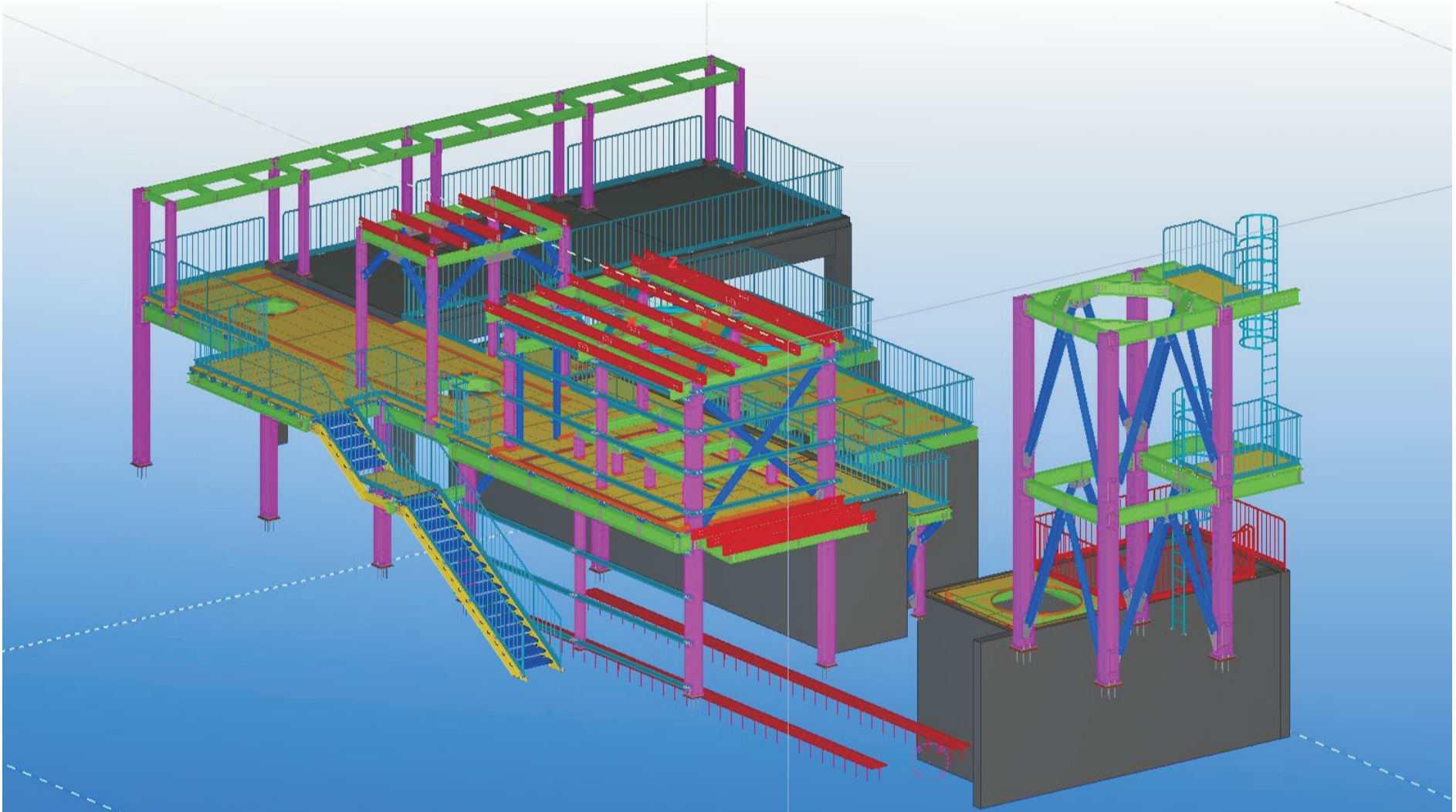
3D - Model



UDV WAREHOUSE

Project Name	UDV Warehouse
Software	: Tekla 21
Responsibility	Detailing of Floor Beam, Elevation, Column & Brace
Weight	: 40 Ton

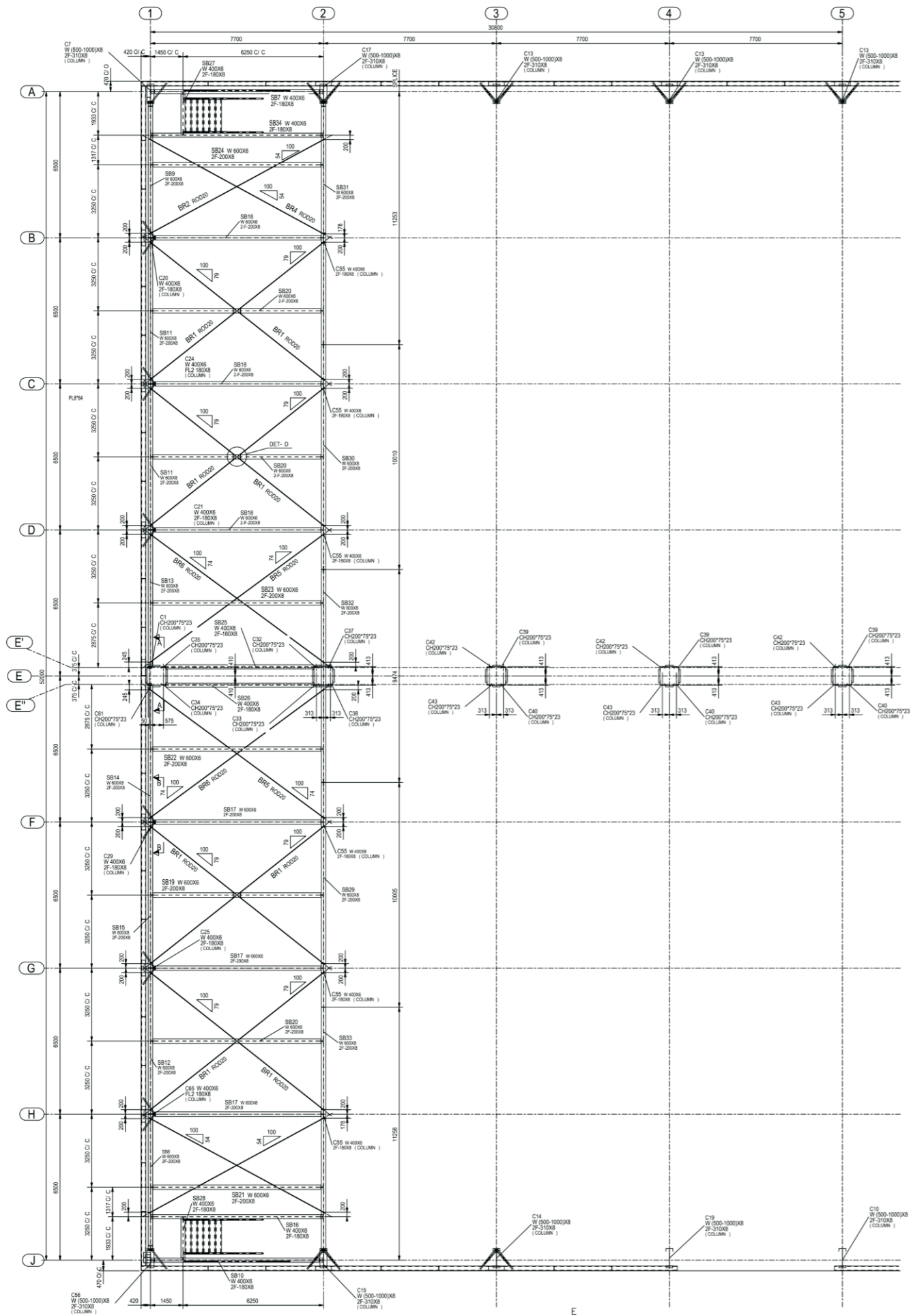
3D - Model



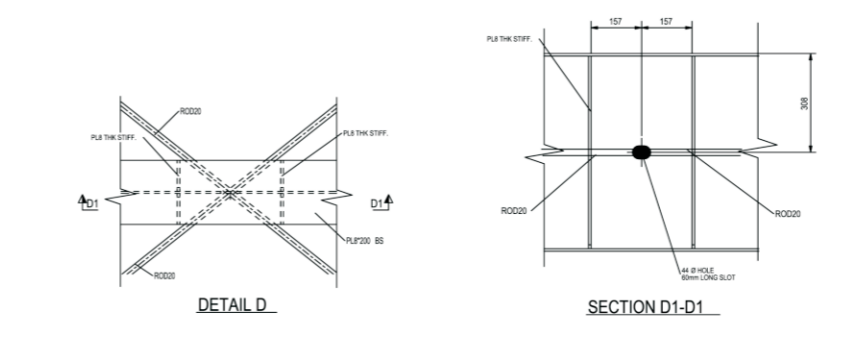
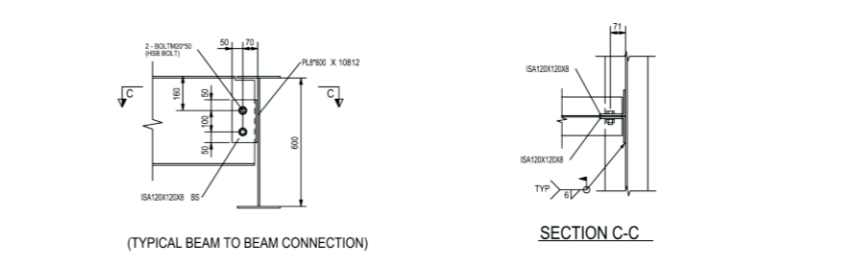
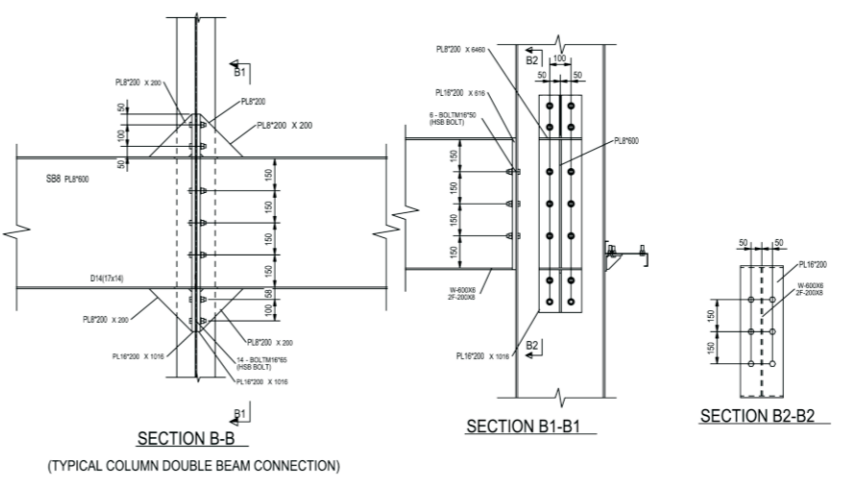
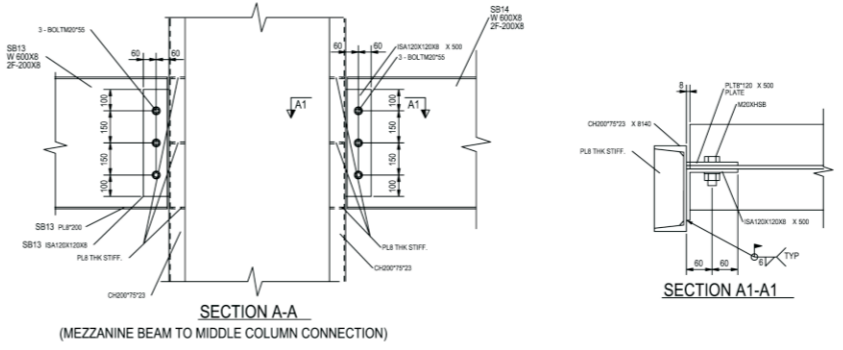
NEUTRALIZATION

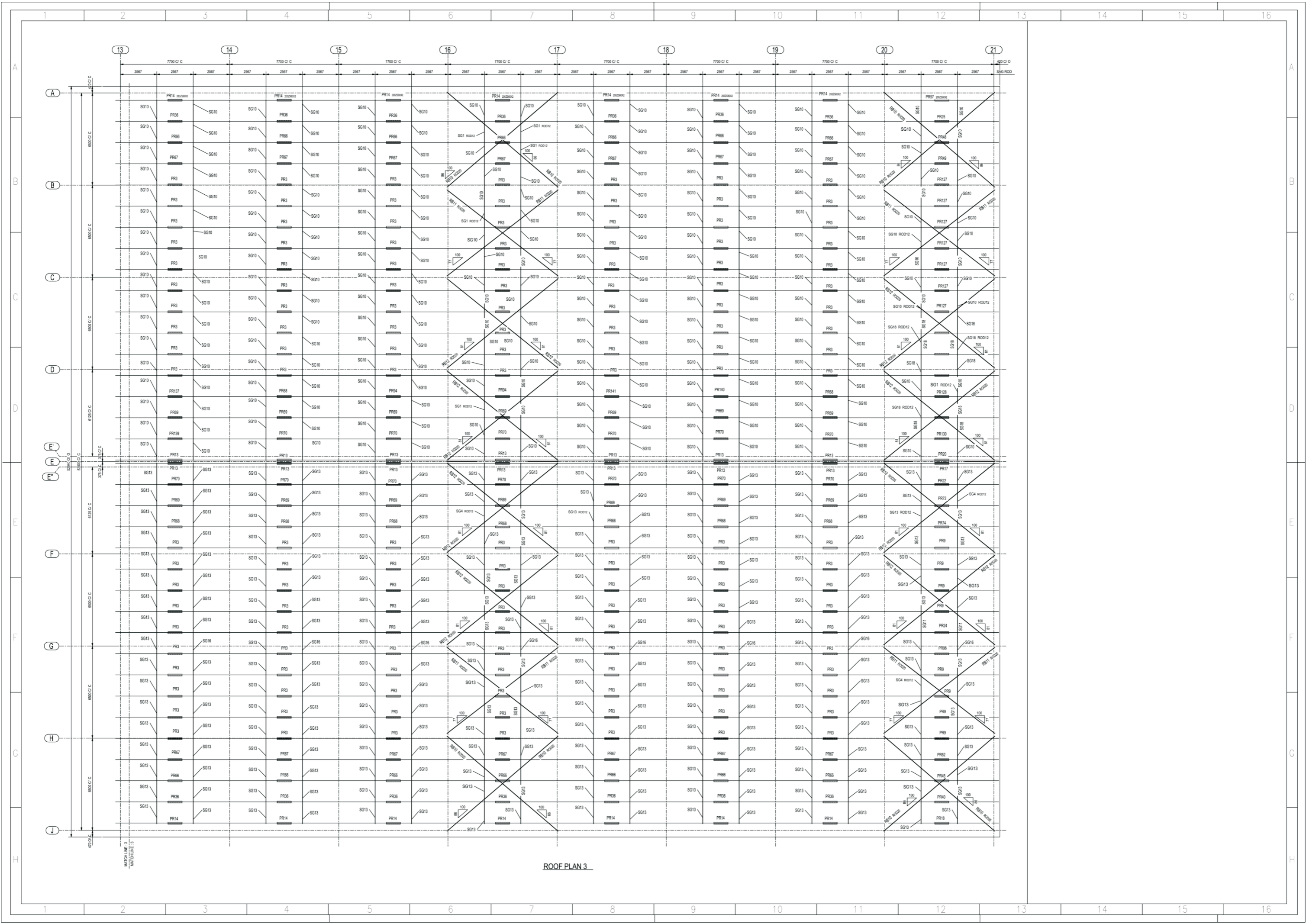
Project Name	Neutralization
Software	: Tekla 21
Responsibility	Detailing of Floor Beam, Elevation, Column & Brace
Weight	: 40.8 Ton

The above shown diagrams are 3d Model view with their profiles and clients. These drawings are used in the latest version of Tekla. Not only that we also provide 2d drawings for Columns, Beams, Truss, Brace, Miscellaneous drawings like Stair, Handrail and Ladder. We also check Part List, Material List, Kiss File.



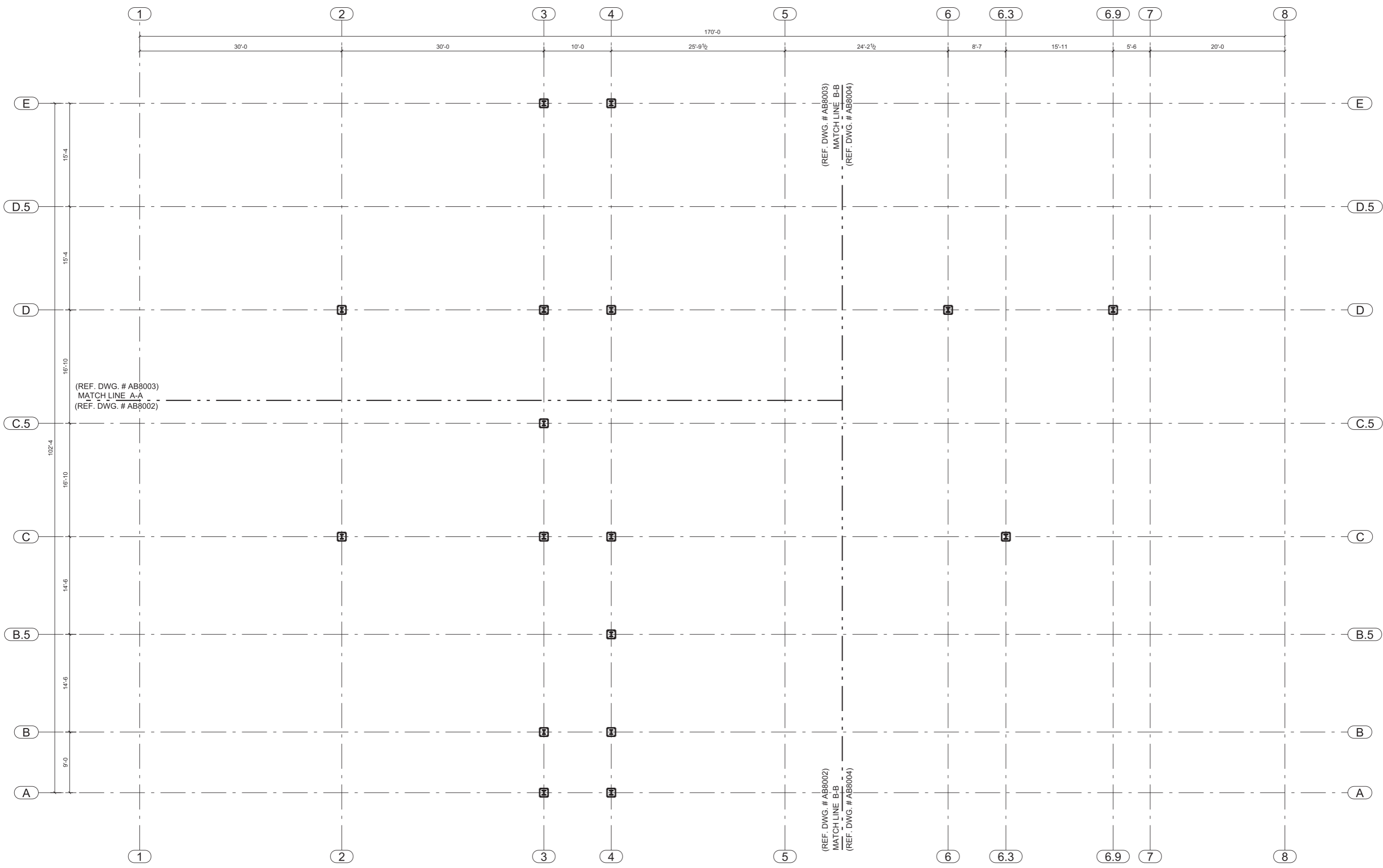
PARTIAL MEZZANINE FRAMING PLAN
(TOP OF BEAM ELEVATION AT 4523.00 U.N.O)



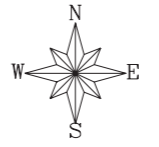


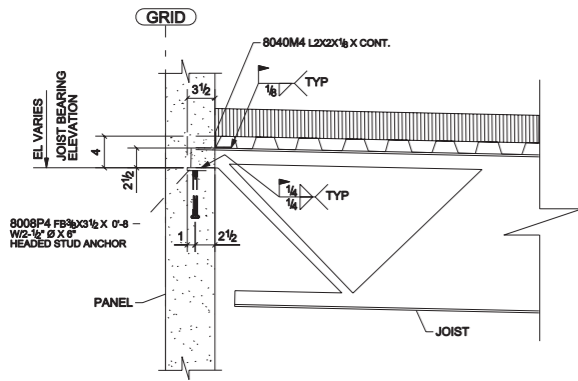
ROOF PLAN 3

MATCHLINE 3
MATCHLINE 3

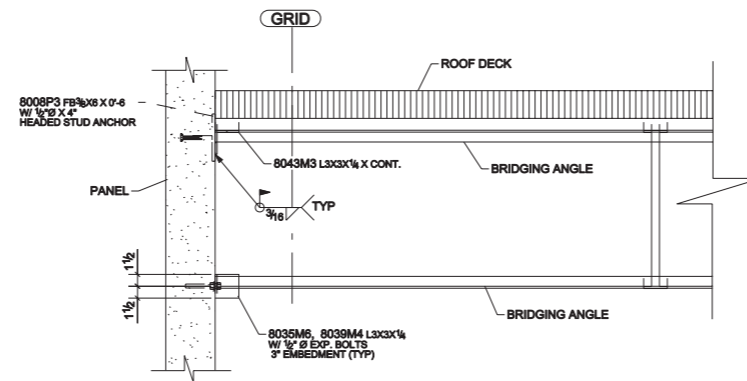


OVERALL FOUNDATION ANCHOR BOLT SETTING PLAN - BUILDING "A"
(GRID DIMENSIONS ONLY)

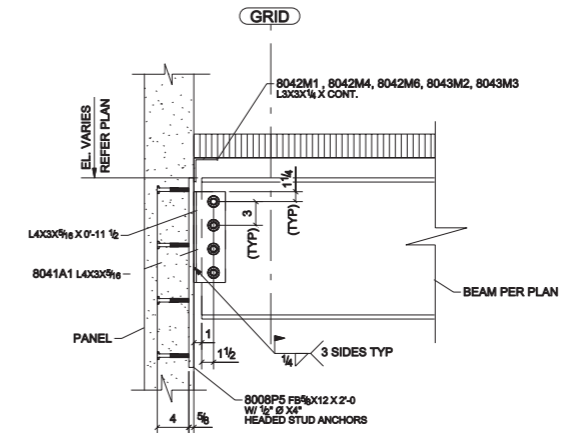




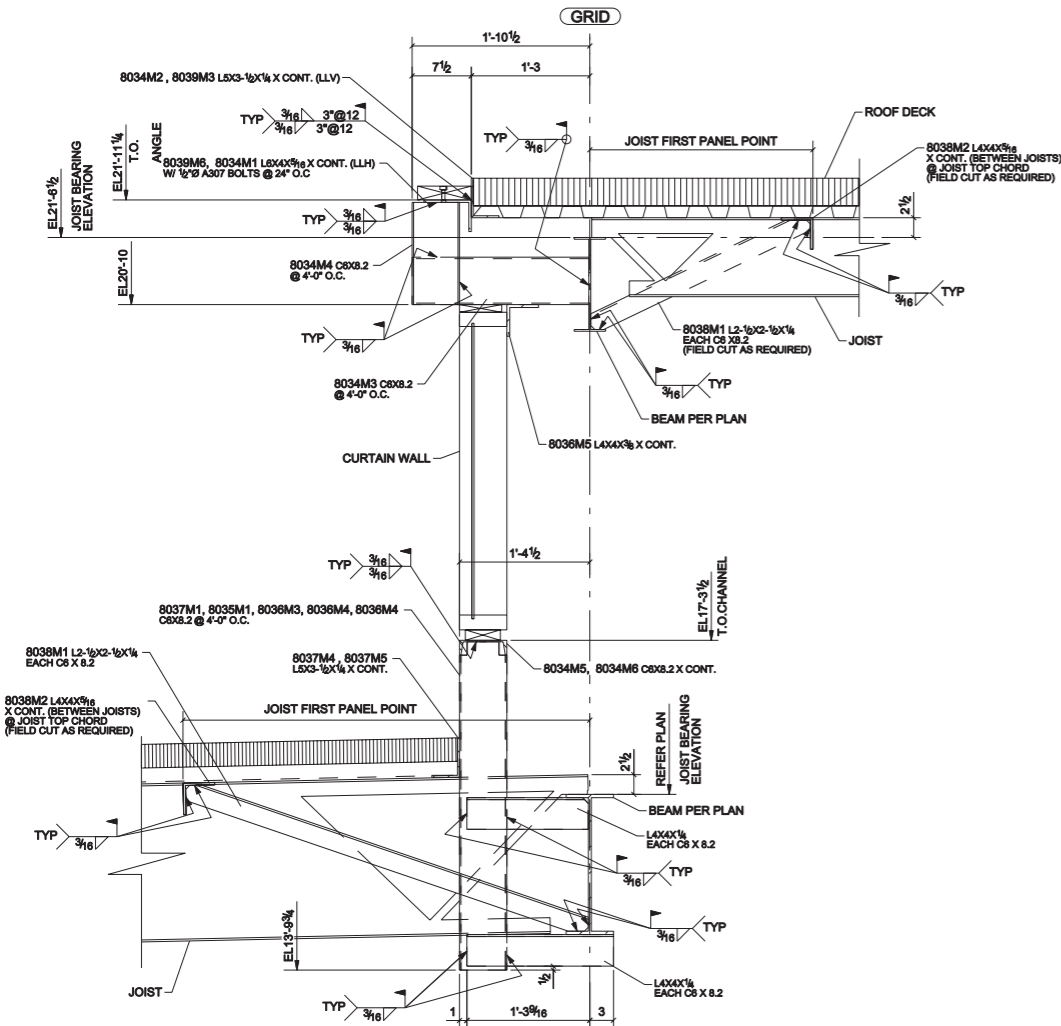
SECTION 1-1
(REF. DWG. # 1/S6.1)
(REF. DWG. # E8002, E8003, E8006, E8007)



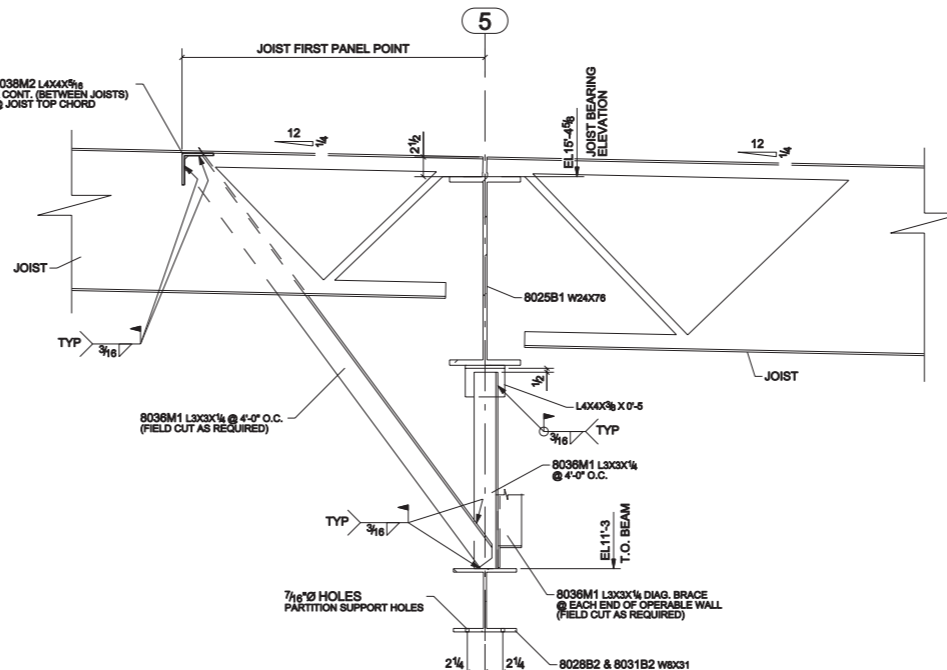
SECTION 2-2
(REF. DWG. # 2/S6.1)
(REF. DWG. # E8002, E8003, E8006, E8007)



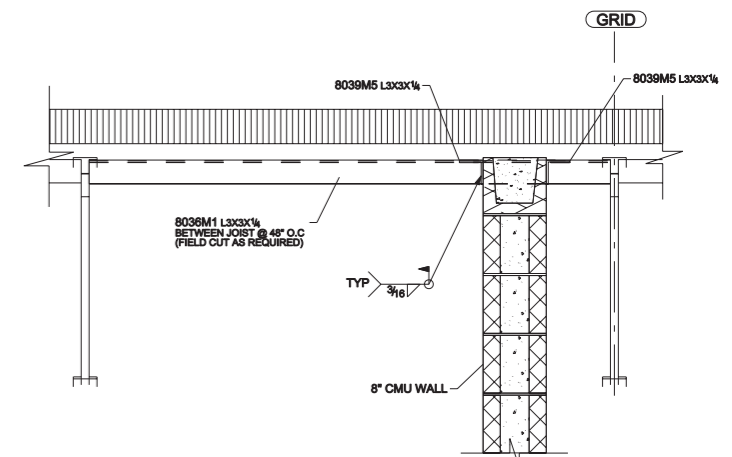
SECTION 3-3
(REF. DWG. # 5/S6.1)
(REF. DWG. # E8002, E8003)



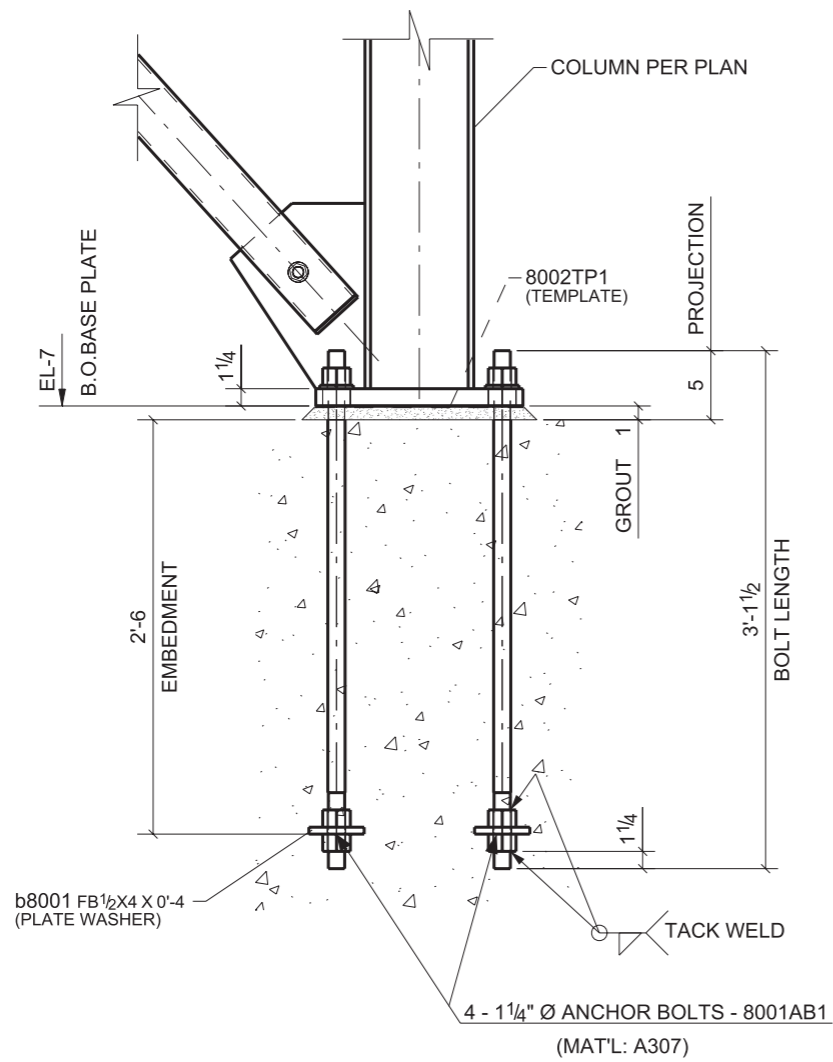
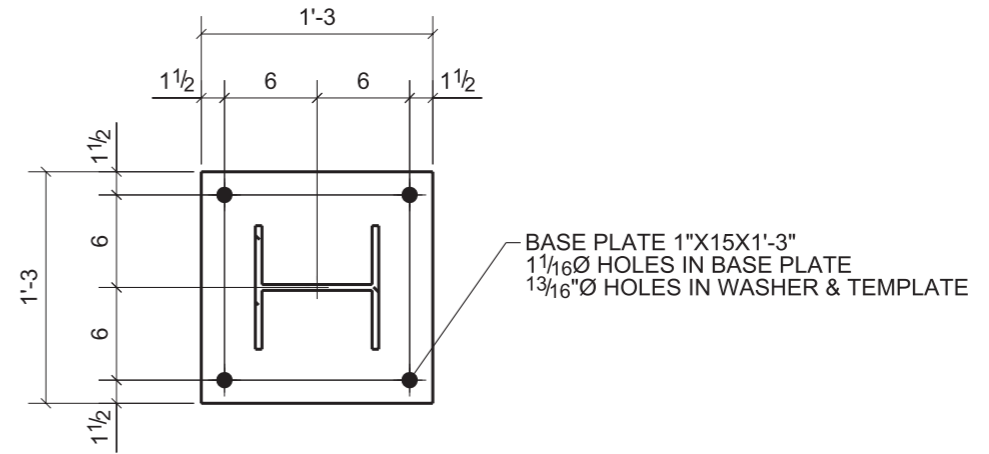
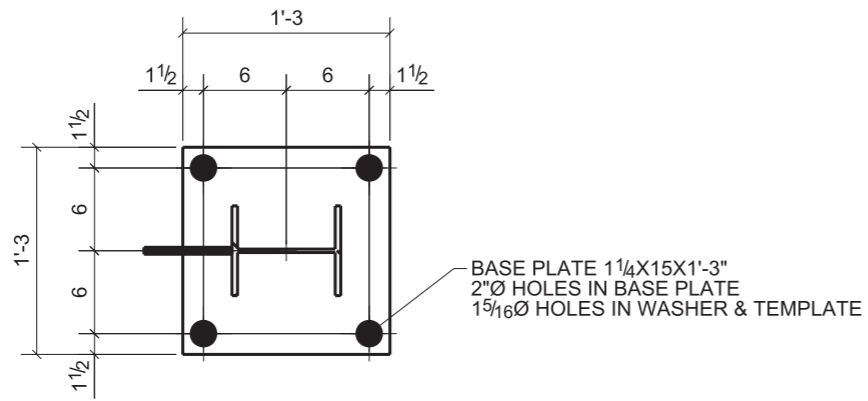
SECTION 4-4
(REF. DWG. # 4/S6.4)
(REF. DWG. # E8002, E8003, E8004, E8006, E8007, E8008)



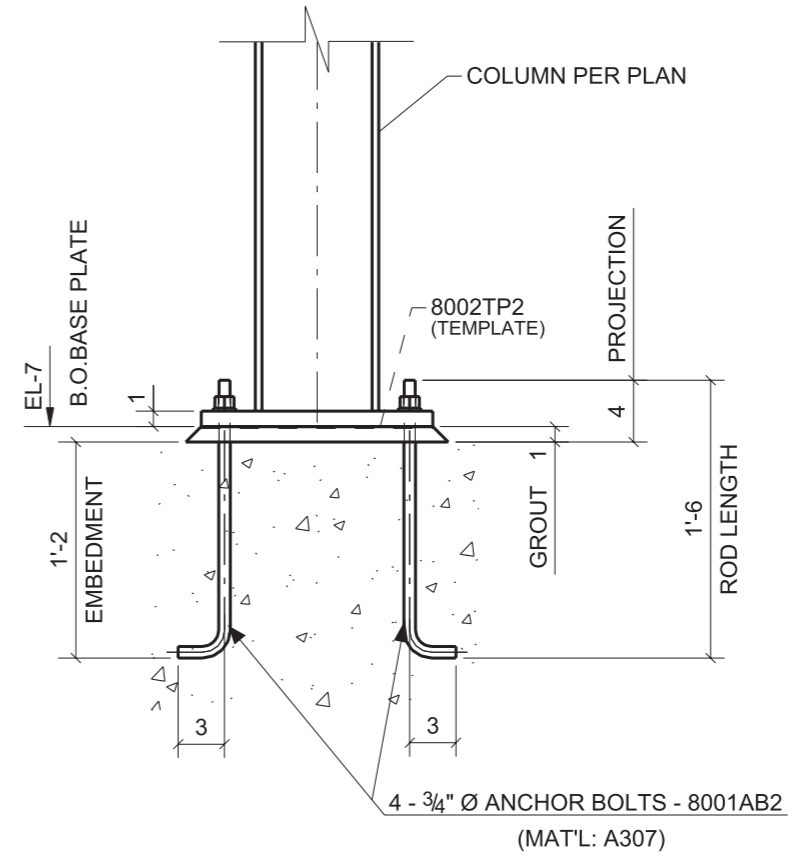
SECTION 5-5
(REF. DWG. # 14/S6.3)
(REF. DWG. # E8002, E8006)



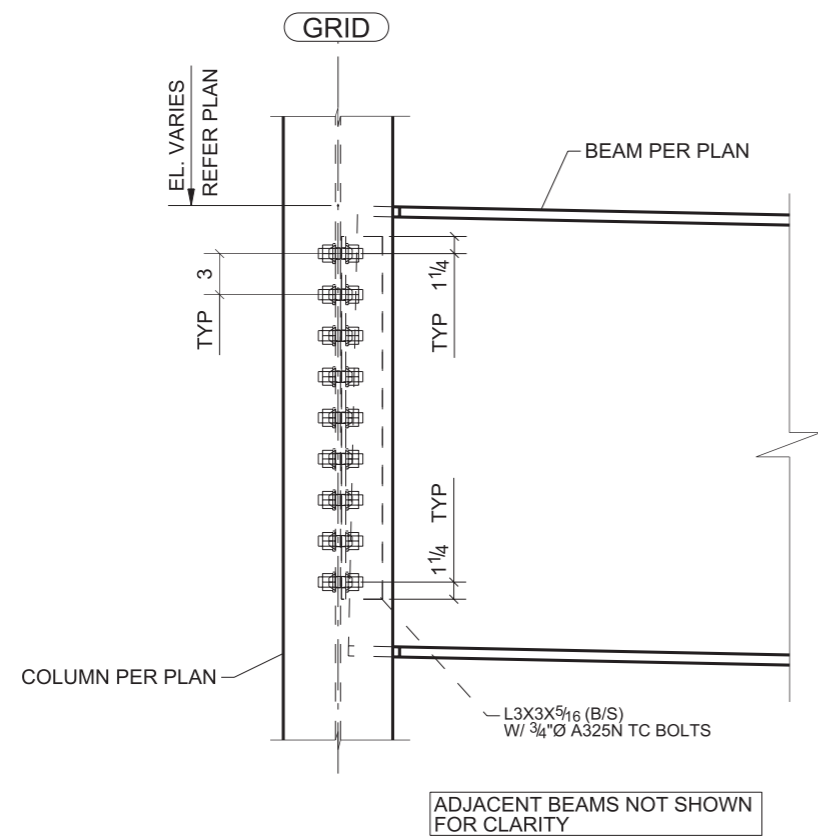
SECTION 6-6
(REF. DWG. # 11/S6.1)
(REF. DWG. # E8006)



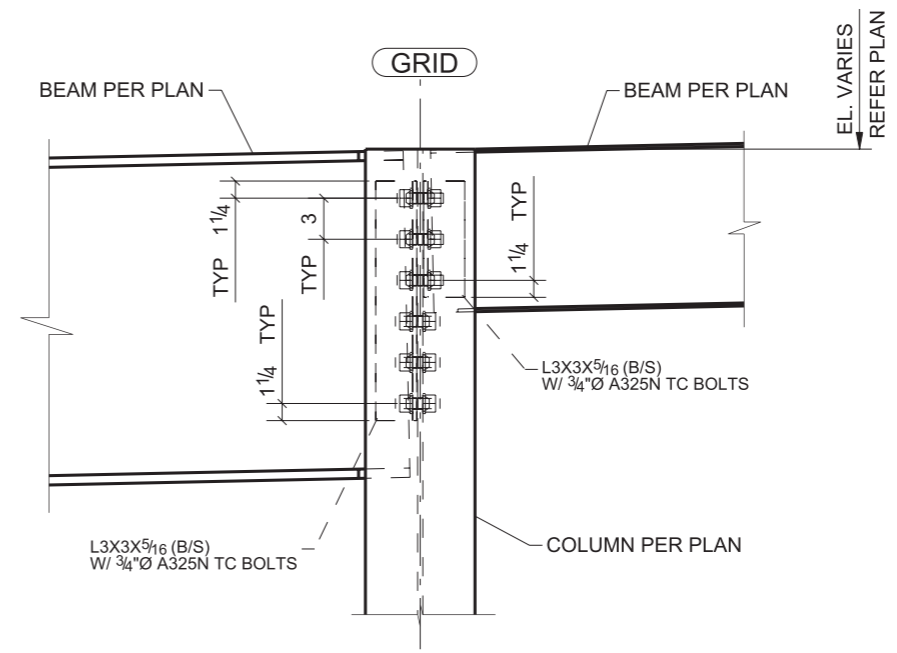
TYPE - A



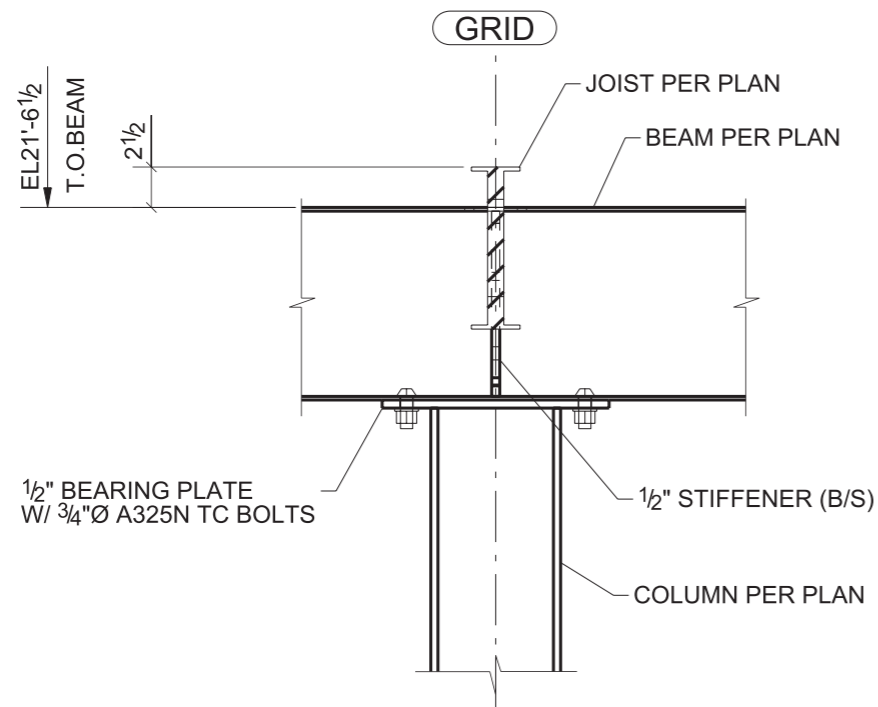
TYPE - B



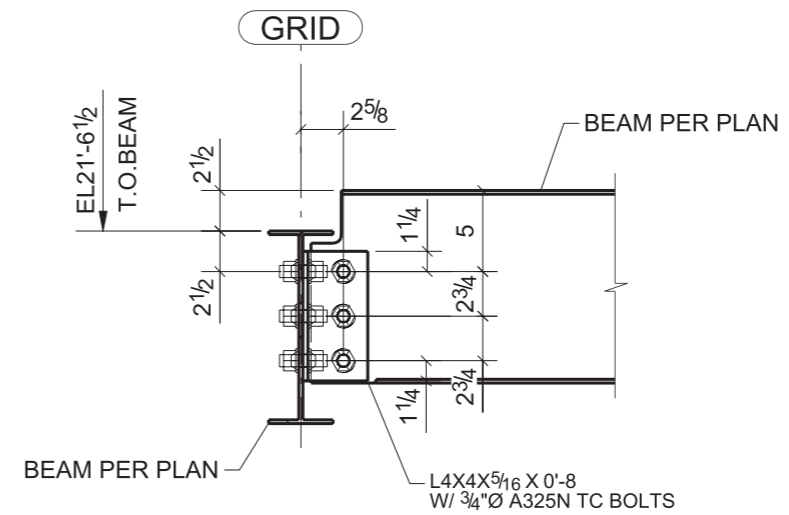
SECTION 17-17
 (TYPICAL COLUMN TO BEAM WEB CONNECTION)
 (REF. DWG. # E8002)



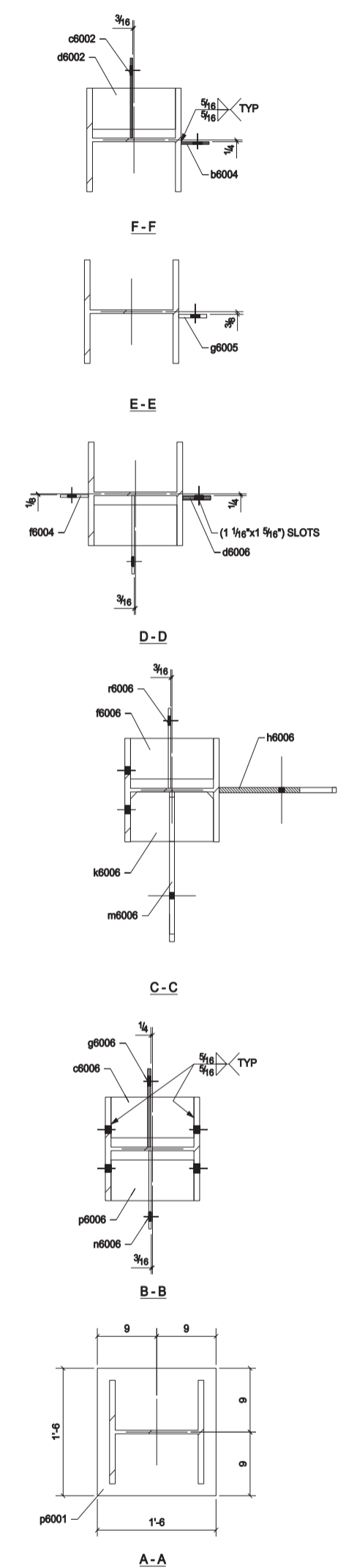
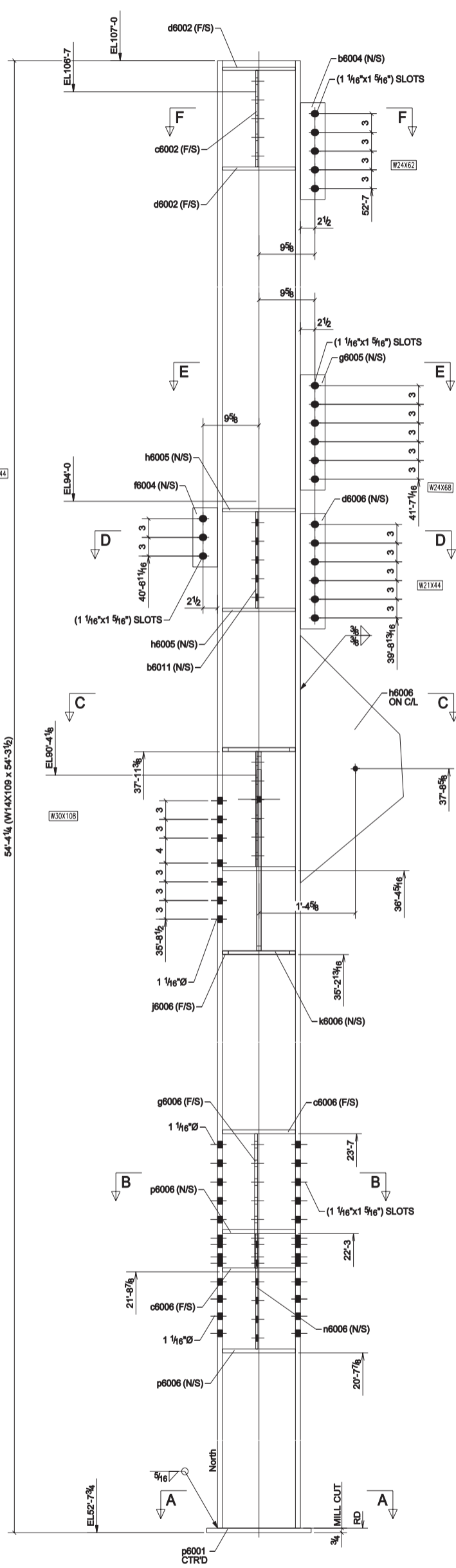
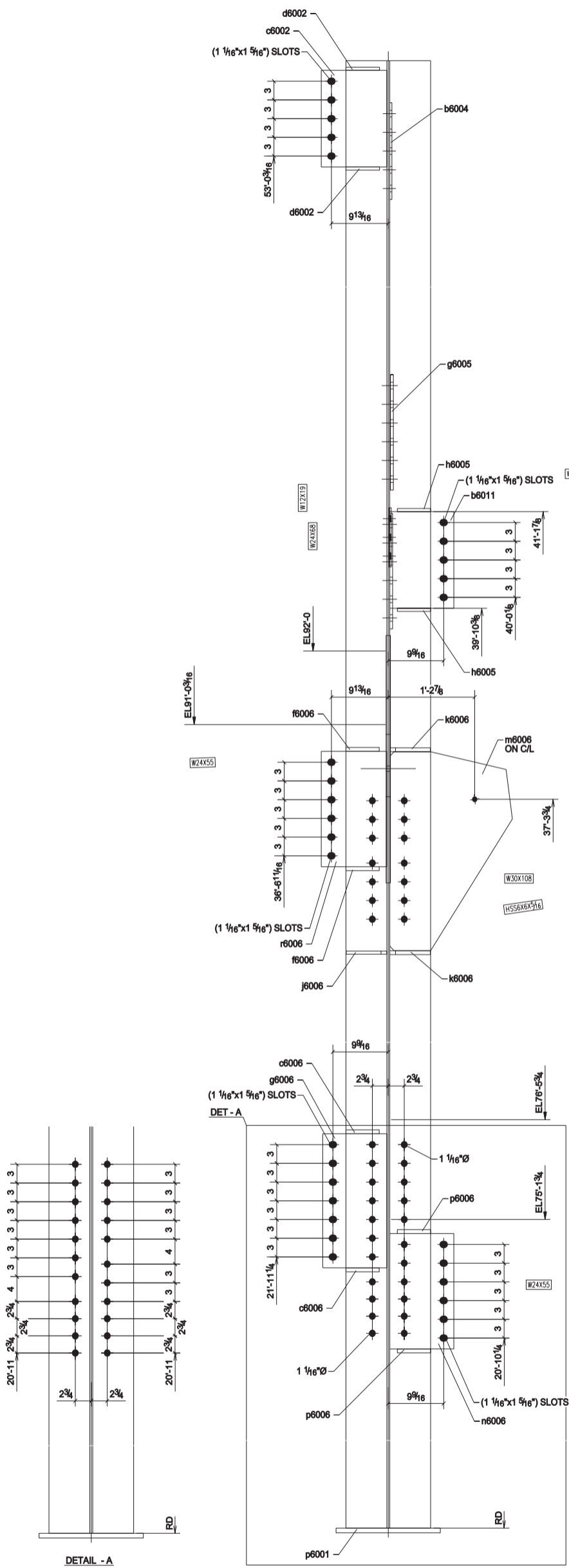
SECTION 18-18
 (TYPICAL COLUMN TO BEAM WEB CONNECTION)
 (REF. DWG. # E8003)



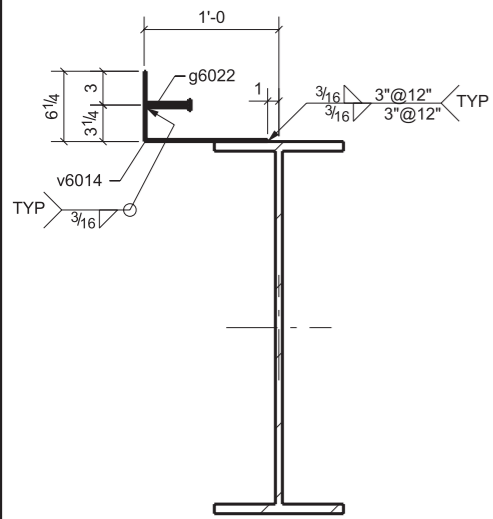
SECTION 21-21
 (TYPICAL COLUMN TO BEAM CONNECTION)
 (REF. DWG. # E8004)



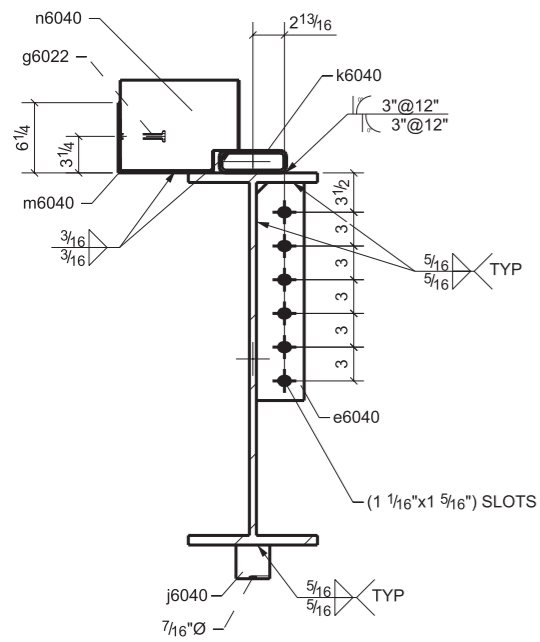
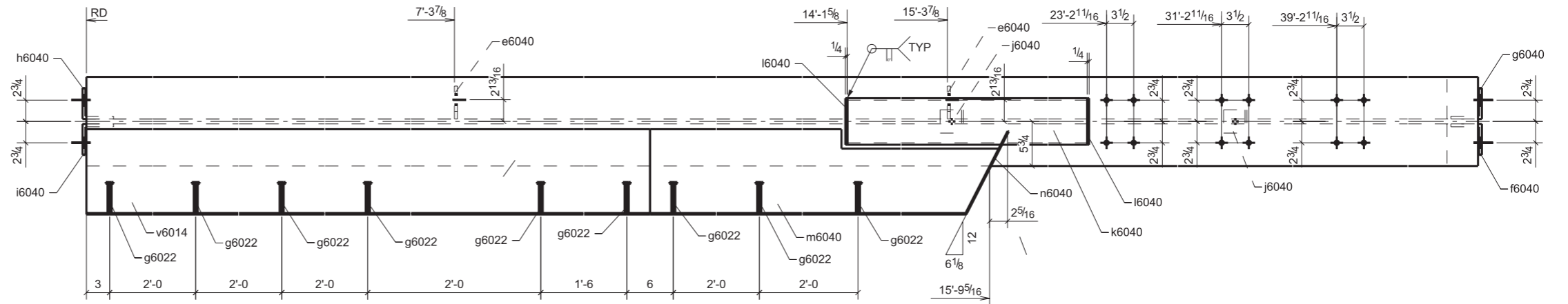
SECTION 22-22
 (REF. DWG. # E8004)



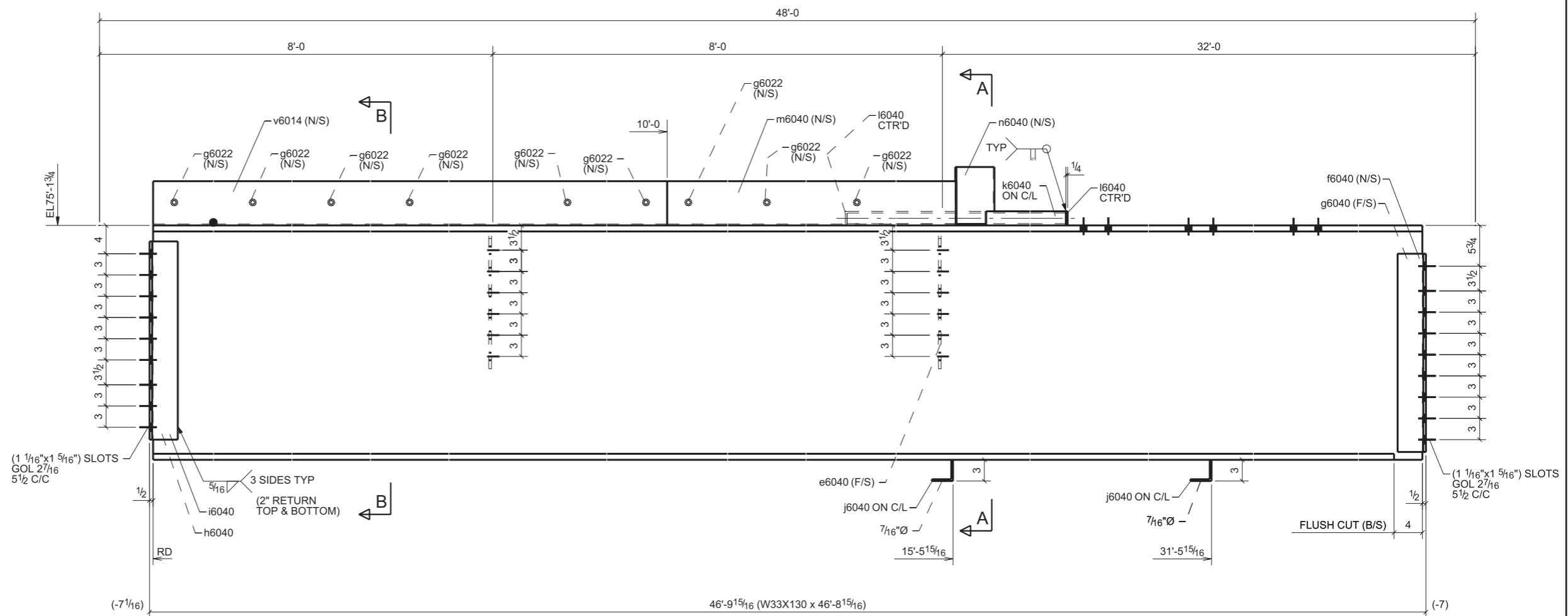
1 - COLUMN 6006C1



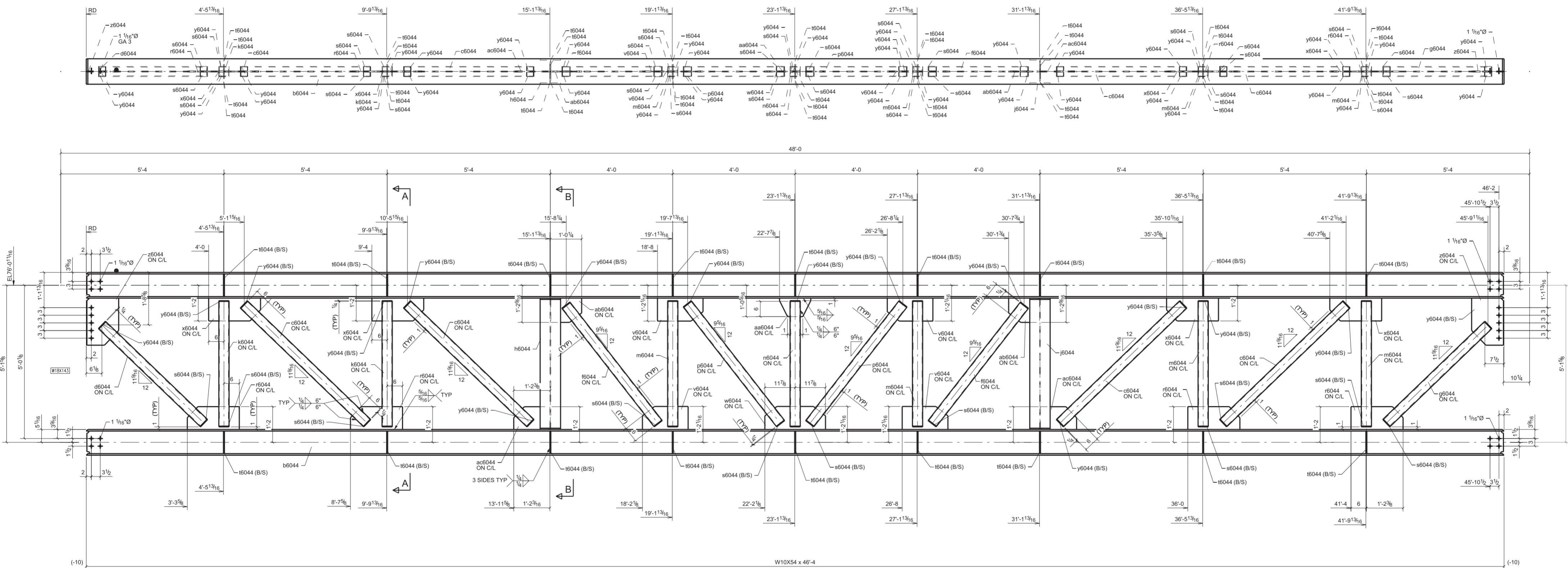
B - B



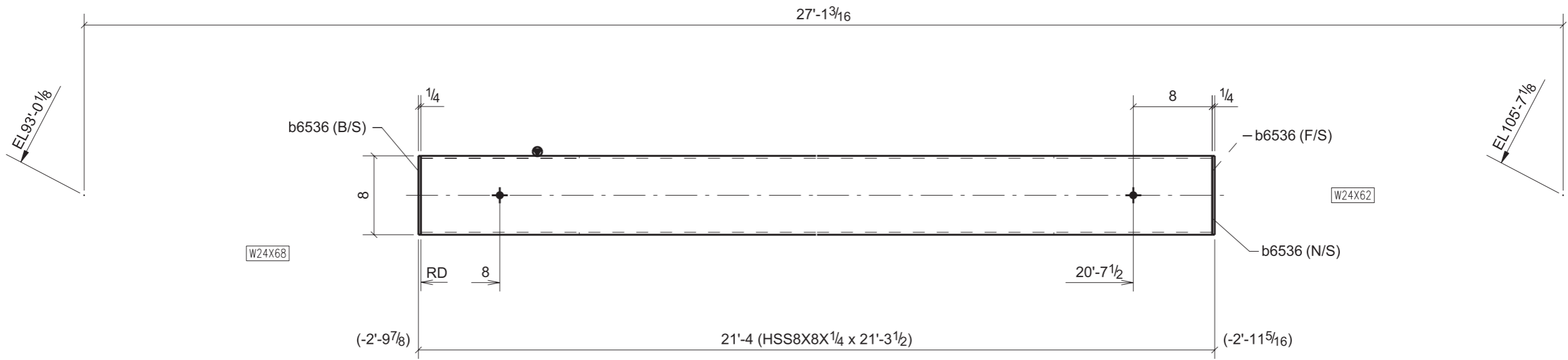
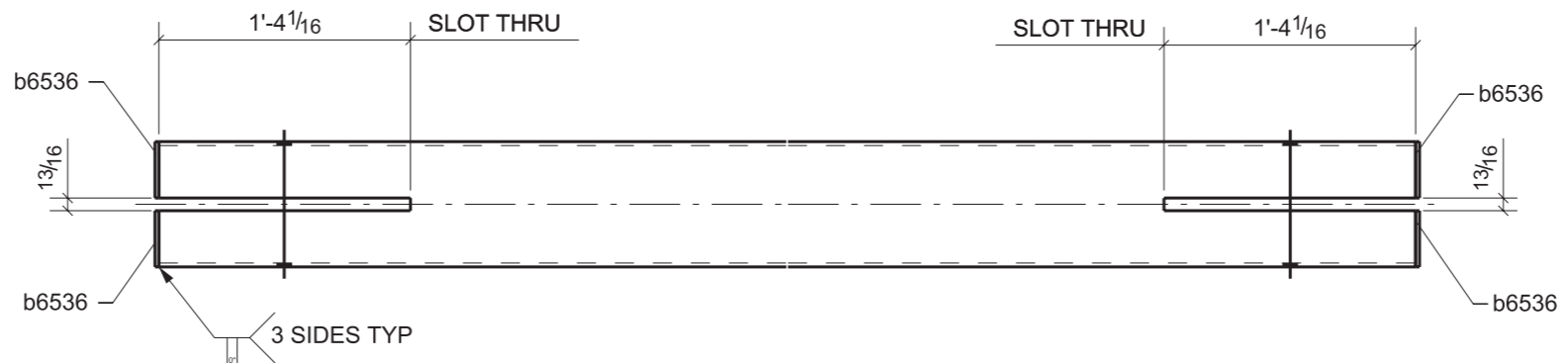
A - A



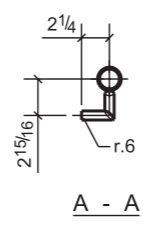
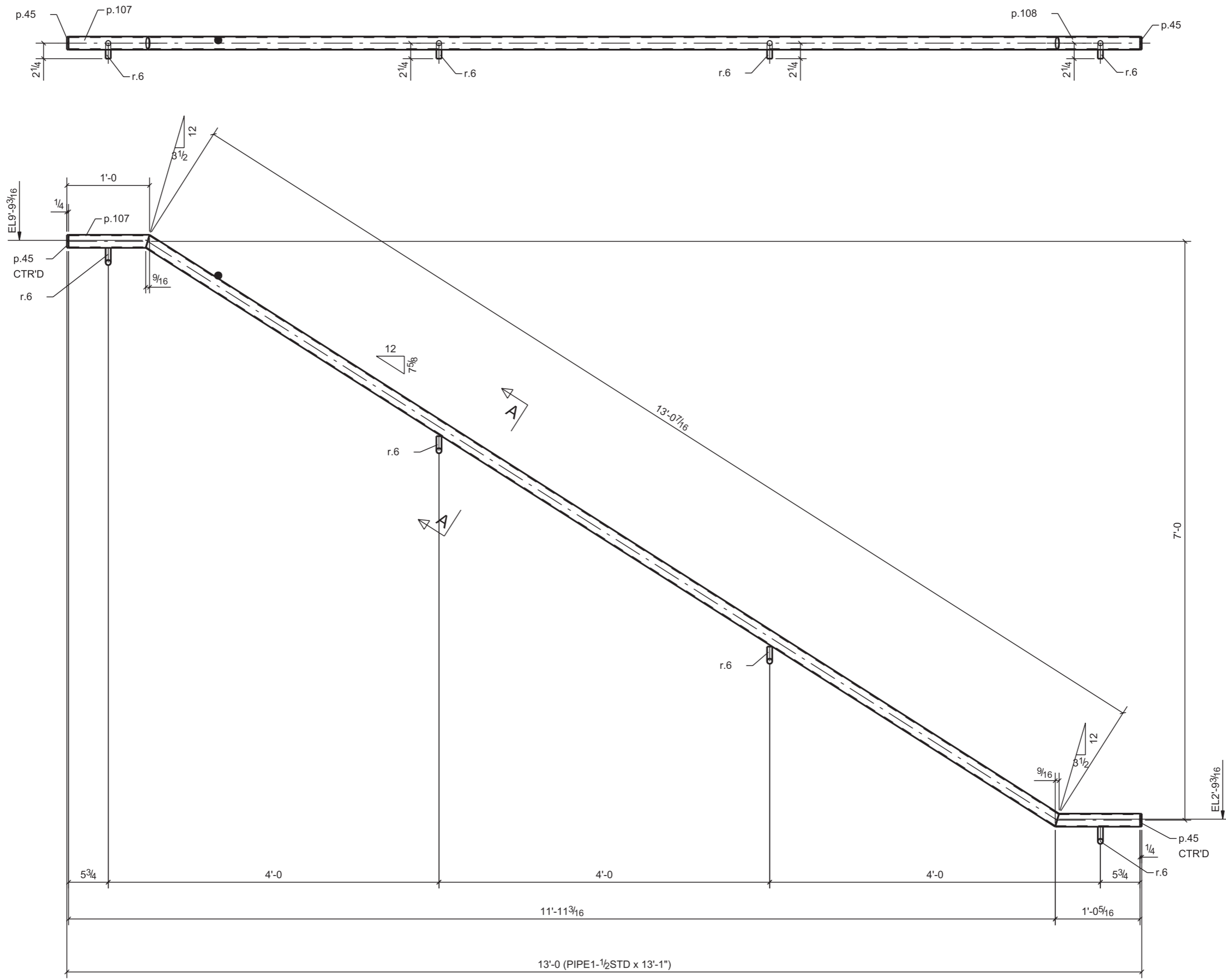
1 - BEAM 6040B1



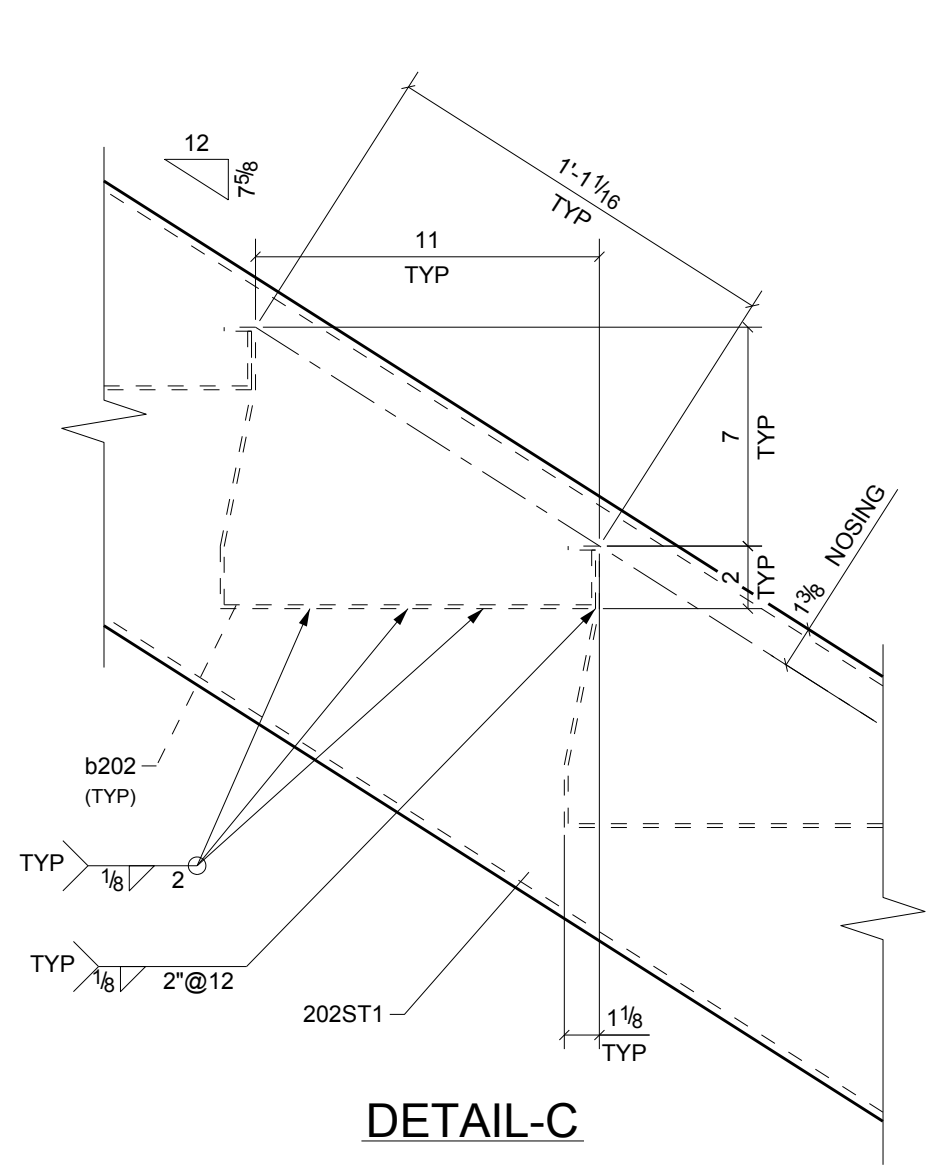
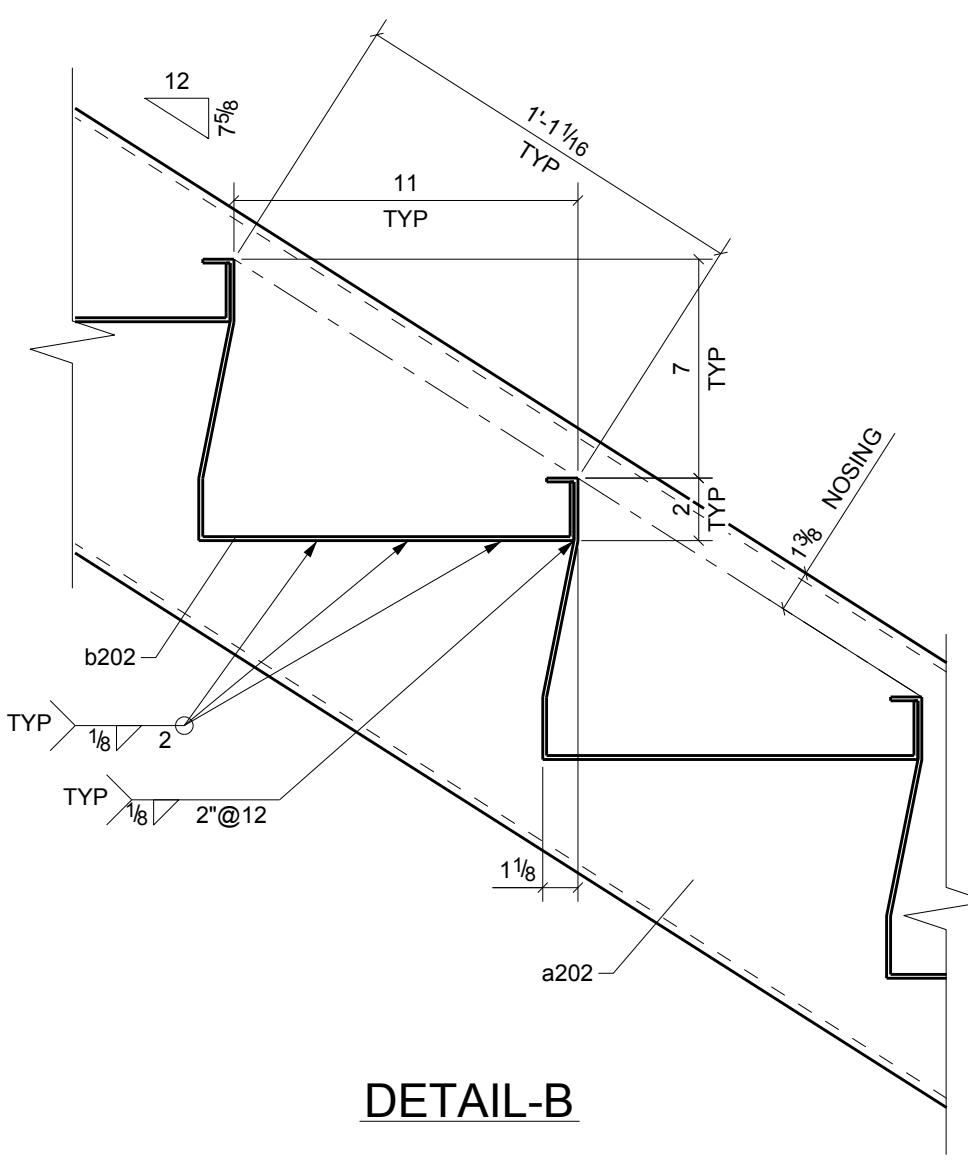
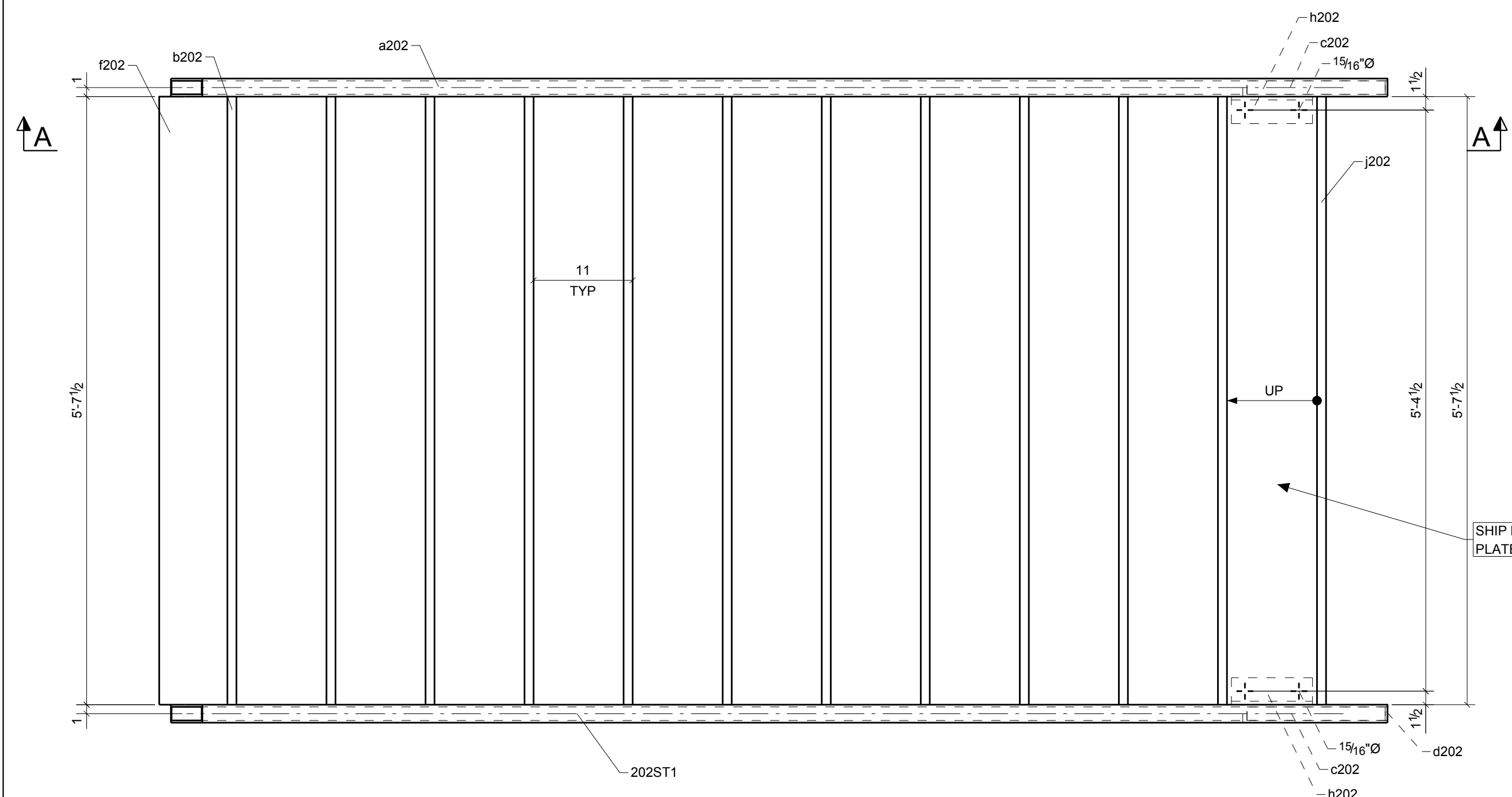
1 - TRUSS 6044T1



1 - BRACE 6540D1

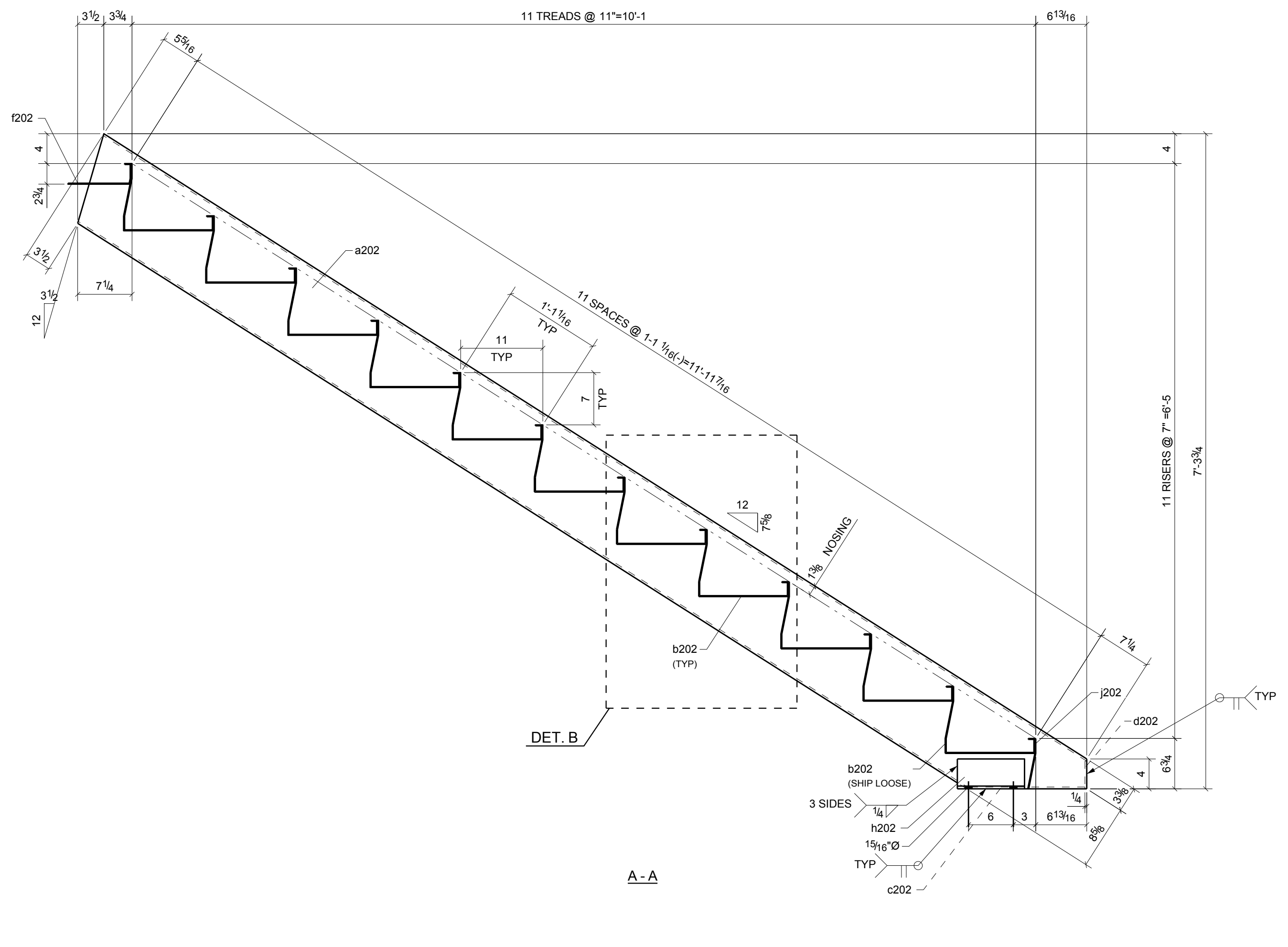
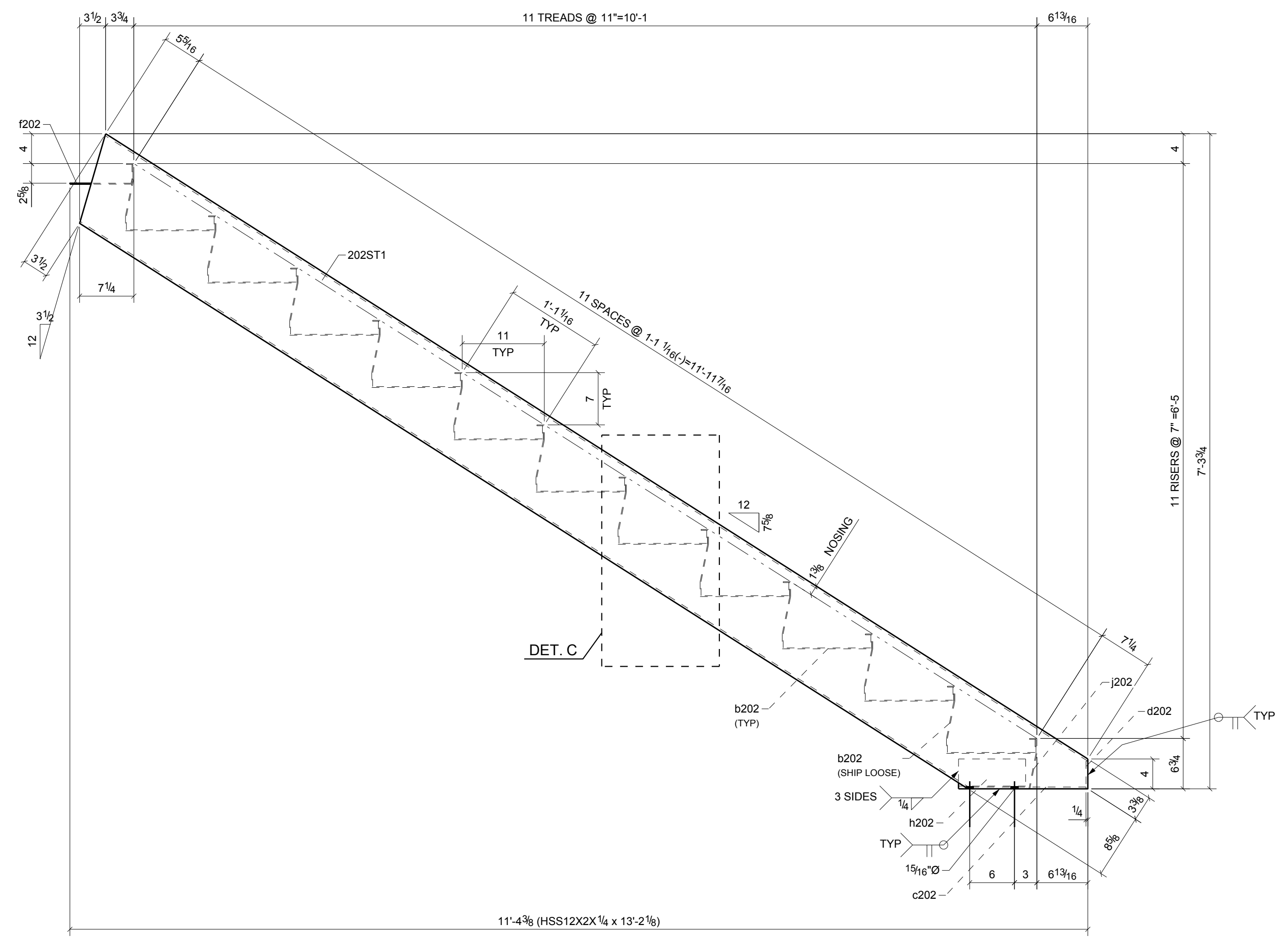


2 HANDRAIL 169A



DETAIL-B

DETAIL-C



ONE - STRINGER - 202ST1



BMS Steel Detailing Services

Old No: 03, New No: 07, Babu Stereet,
Ranganathan Nagar, Porur,
Chennai - 600116
Tamil Nadu, India.
Mobile : +919841846710

Expectance

As we given all the details which we have crossed through out Tekla, we will perform a good output if we have given an opportunity. Not only this we will assure 100% Quality and punctuality for the challenges we have taken.

Opportunities are First step for Developments.

We are expecting it from you.



A

Team Work from

BMS Steel Detailing Services